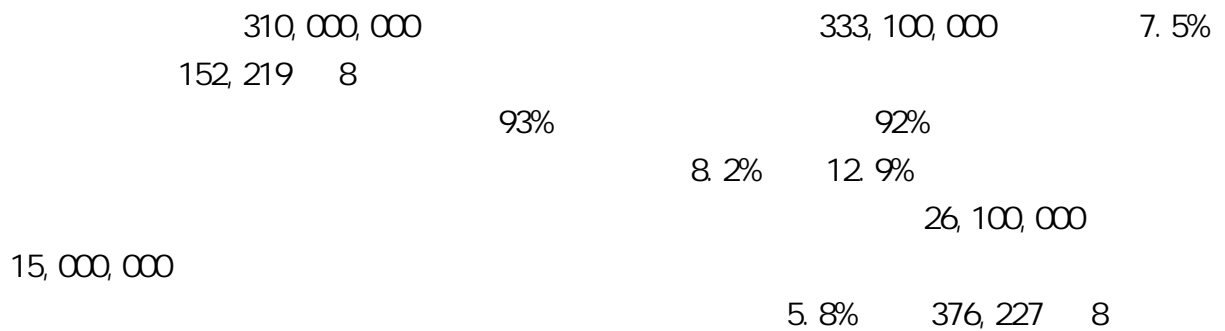
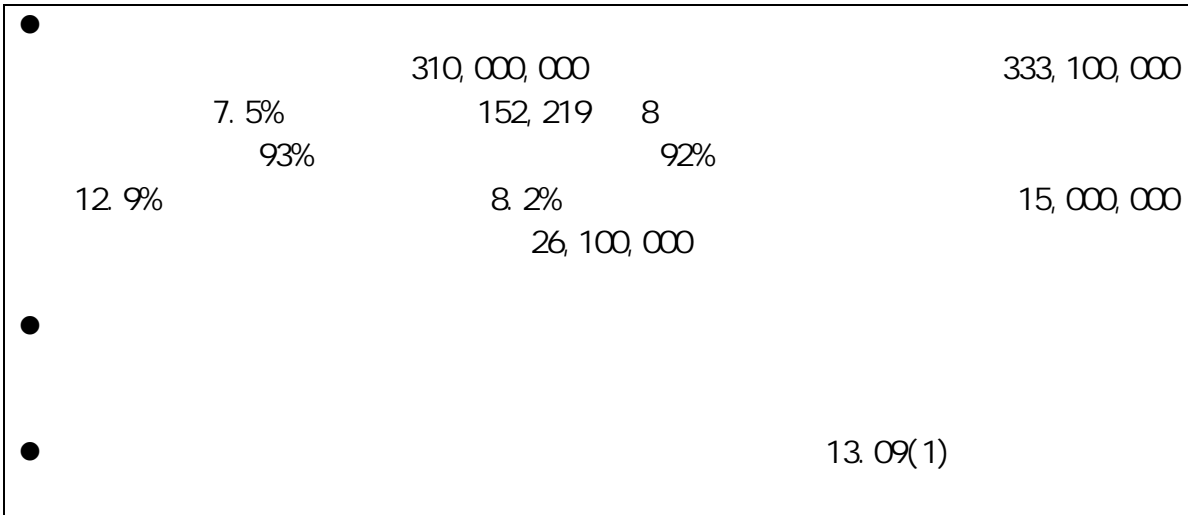


SEMICONDUCTOR MANUFACTURING INTERNATIONAL CORPORATION

*

0981



	SMI	981		
310,000,000	7.5%	333,100,000		152,219
8			93%	8.2%
	12.9%		26,100,000	
	15,000,000			
5.8%	376,227	8		
“				”
		“		

Amsterdam Atradius Dutch State Business N.V. of

0.13 3G TDS-CDMA/WCDMA/CDMA2000

”

1-617-614-2714

SMIC

852-3002-1672

SMIC

www.smic.com

(NYSE: SMI, SEHK: 0981.HK)

0.35

90

2000

8

12

2005

2500

ISO9001

ISO/TS16949

CHAS18001

TL9000

BS7799

ISO14001

<http://www.smic.com>

1995

1995

1,100,000,000

A-1

6 K

Jimmy Lai

86-21-5080-2000

16088

86-21-5080-3619

Calvin Lau

86-21-5080-2000

16693

86-21-5080-3619

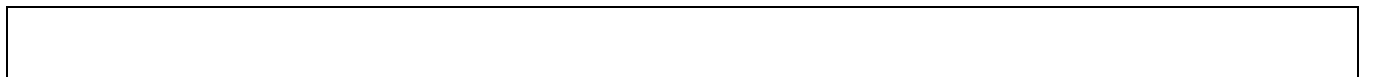
+85294352603

+8613636468590

	_____	_____	_____	_____	_____
	_____	_____		_____	
	333,052	309,959	7.5%	291,842	14.1%
	290,094	284,686	1.9%	231,293	25.4%
	42,958	25,273	70.0%	60,549	-29.1%
	51,756	46,219	12.0%	83,937	-38.3%
	(8,798)	(20,946)	-58.0%	(23,388)	-62.4%
	(5,852)	(5,602)	4.5%	12,358	-
	152	6	2,433.3 %	186	-18.3%
	(14,802)	(26,554)	-44.3%	(11,216)	32.0%

		284,700,000	1.9%
290,100,000			
	43,000,000		25,300,000
70.0%		60,500,000	29.1%
	8.2%		12.9%
		19,200,000	23.5%
23,700,000			
		9,100,000	11.0%
8,100,000			
		4,100,000	40.0%
5,700,000			
10,700,000	0.2%	10,600,000	
		20,900,000	58.0%
8,800,000		23,400,000	62.4%
		5,600,000	4.5%
5,900,000			
			10,300,000
11,800,000			14.1%
	700,000		600,000
			100,000
			26,100,000
			42.6%
15,000,000		11,200,000	33.5%

1. _____



25.7% 26.9% 28.2% 29.0%

0.18

91.8% 90.4% 62.3%

0.18

87.4% 84.8% 45.9%

	(1)	(1)
8	43,441	43,000
8	46,451	44,378
12	27,368	21,605
8	15,000	15,000
	132,260	123,983
8	19,959	19,205
	19,959	19,205

1

8

152,219 8

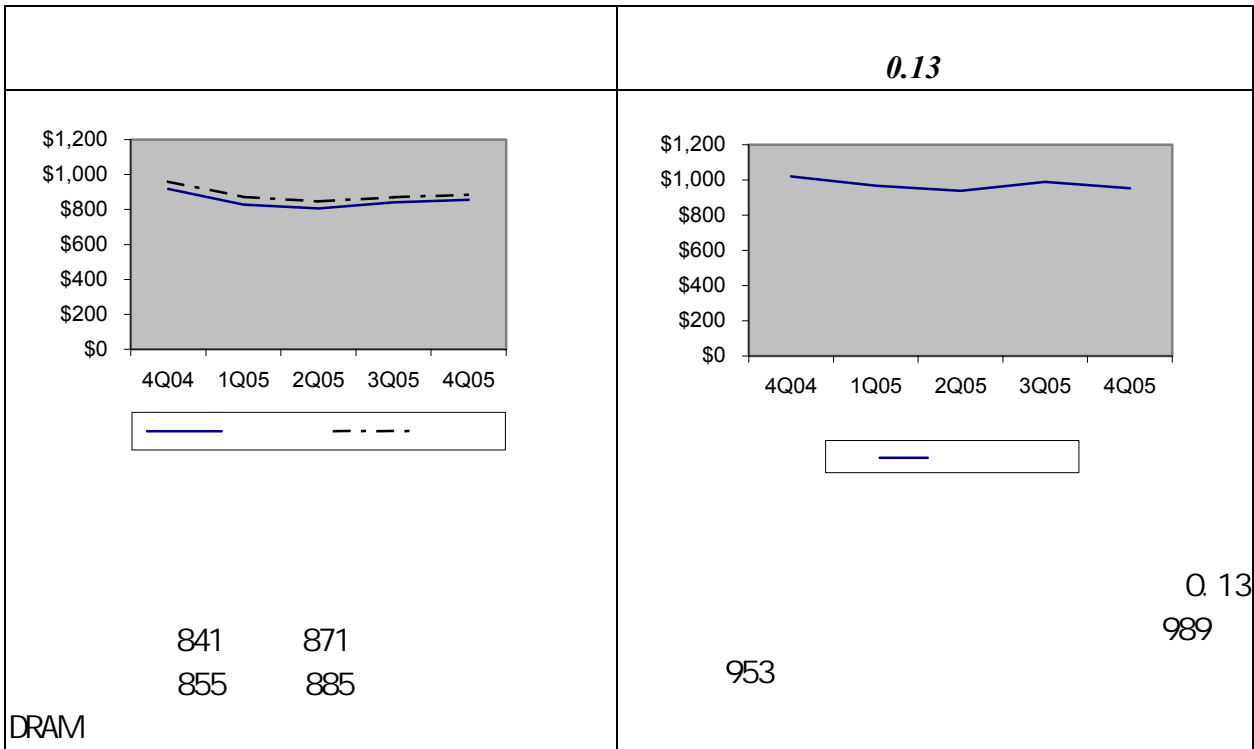
8					
	376,227	355,664	330,499	284,912	303,796
(1)	93%	92%	87%	85%	95%

(1)

355,664 23.8%

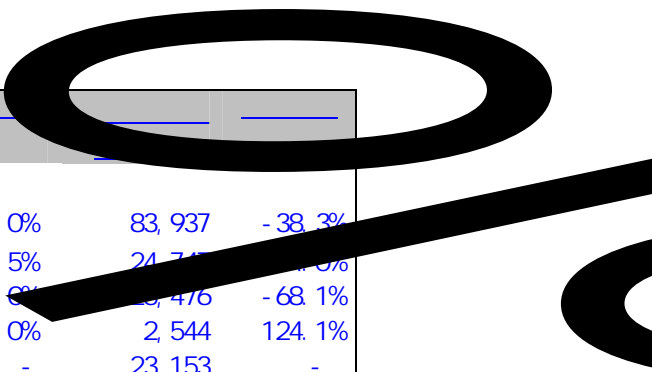
376,227 8 93%

303,796 5.8%



2

	290,094	284,686	1.9%	231,293	25.4%
	176,545	167,919	5.1%	130,839	34.9%
	113,549	116,767	-2.8%	100,454	13.0%
	42,958	25,273	70.0%	60,549	-29.1%
	12.9%	8.2%		20.7%	
	284,700,000		1.9%		
290,100,000					
	43,000,000			25,300,000	
70.0%		60,500,000		29.1%	
	8.2%		12.9%		



	51,756	46,219	12.0%	83,937	-38.3%
	23,747	19,230	23.5%	24,711	-4.0%
	8,122	9,122	-11.0%	25,476	-68.1%
	5,699	4,072	40.0%	2,544	124.1%
	-	-	-	23,153	-
	10,640	10,660	-0.2%	4,092	160.0%
	3,548	3,135	13.2%	3,925	-9.6%

12.0%

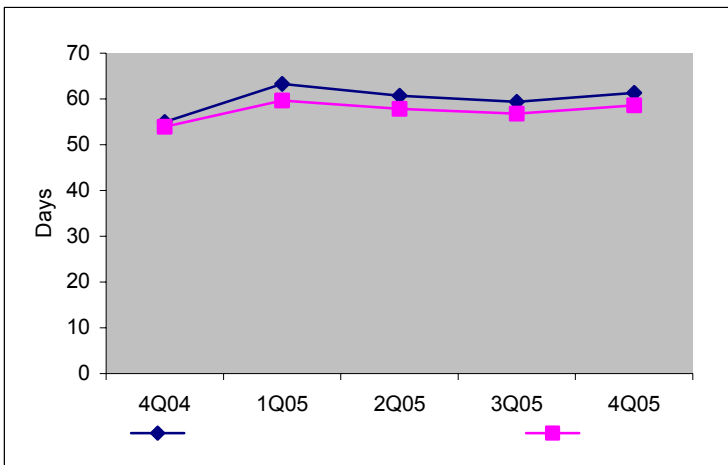
46,200,000

51,800,000

19,200,000

23.5%

585,797	576,767
13,796	5,582
241,334	212,823
191,238	182,851
15,300	12,582
1,047,465	990,605
262,318	259,797
265,481	266,589
246,081	246,081
122,158	113,154
896,038	885,621
0.7x	0.7x
1.0x	0.9x
1.2x	1.1x



	585, 797	576, 767
	13, 796	5, 582
	29, 242	19, 578
	103, 254	116, 749
	265, 481	266, 589
	246, 081	246, 081
	494, 556	444, 566
	1, 006, 118	957, 236
	(539, 021)	(511, 214)
	3, 026, 099	3, 034, 237
	33. 2%	31. 5%

4. _____

	(14, 978)	(26, 115)
	201, 358	192, 347
	10, 640	10, 661
	9, 030	474

229, 800, 000
1, 100, 000, 000

5. _____

2% 4%

92% 94%

16% 18%

14, 000, 000

250, 000, 000 300, 000, 000

225, 000, 000

123

7, 200, 000

4, 200, 000

3, 000, 000

6

“ ”

ARC

El do 0. 13

90

SAI FUN NROM

LDO

CMOS

0. 18 -VGA.

0. 18 (EEPROM)

Magna 0. 13 ()

1080P LCOS

Q. 13

2005

Q. 13 3G

65

http://www.smics.com/website/enVersion/Press_Center/pressRelease.jsp

1, 091, 340
284, 091

	()	()
	585, 796, 887	576, 766, 591
	13, 795, 859	5, 581, 511
	241, 333, 914	212, 822, 764
	191, 237, 636	182, 850, 604
	15, 300, 591	12, 583, 729
	1, 047, 464, 887	990, 605, 199
	34, 767, 518	38, 136, 980
	3, 285, 631, 131	3, 284, 892, 971
	195, 178, 898	202, 843, 555
	17, 820, 890	18, 340, 174
	2, 552, 407	-
	4, 583, 415, 731	4, 534, 818, 879
	262, 318, 432	259, 796, 976
	92, 916, 030	93, 576, 700
	265, 481, 082	266, 589, 185
	29, 242, 001	19, 577, 936
	246, 080, 580	246, 080, 580
	896, 038, 125	885, 621, 377
	103, 254, 436	116, 748, 925
	494, 556, 385	444, 566, 420
	24, 686, 398	15, 039, 304
	622, 497, 219	576, 354, 649
	1, 518, 535, 344	1, 461, 976, 026

0.0004		
50,000,000,000		
	18,301,680,867	
18,282,217,408		
	7,320,674	7,312,888
	32,387	32,387
	3,291,407,447	3,290,310,978
	-	(247,137)
	138,978	794,214
	(24,881,919)	(31,025,668)
	(247,919,043)	(232,940,702)
	3,026,098,524	3,034,236,960
	4,583,415,731	4,534,818,879

	()	()
	333,051,413	309,959,083
	287,156,674	281,908,983
	2,937,243	2,777,550
	42,957,496	25,272,550
	23,746,620	19,229,715
	8,121,786	9,121,980
	5,699,526	4,071,957
	10,639,905	10,660,670
*	3,548,051	3,134,817
	51,755,888	46,219,139
	(8,798,392)	(20,946,589)
	4,119,974	3,277,964
	(11,791,740)	(10,333,503)
	2,214,436	1,453,794
	(5,457,330)	(5,601,745)
	395,013	-
	(14,650,735)	(26,548,334)
	151,636	6,068
	(175,970)	438,934
	(14,978,341)	(26,115,468)
	-	-
	(14,978,341)	(26,115,468)
	(0.0008)	(0.0014)
(1)	(0.0410)	(0.0718)
	(0.0008)	(0.0014)

(1)

(Q 0410)

(Q 0718)

18,251

18,180

18,251

18,180

*

1,217,349

1,125,943

1,681,284

1,403,732

649,418

605,142

3,548,051

3,134,817

(1)

50

	()	()
:	(14, 978, 341)	(26, 115, 468)
	-	-
	(14, 978, 341)	(26, 115, 468)
	175, 970	(438, 934)
()	(1, 776, 513)	(1, 245, 543)
	807, 249	174, 729
	201, 358, 428	192, 347, 054
	10, 639, 905	10, 660, 671
	6, 485, 294	5, 912, 367
	2, 037, 607	1, 033, 022
	519, 284	784, 556
	(29, 318, 399)	(16, 865, 479)
	(8, 387, 032)	(6, 348, 289)
	(5, 937, 696)	2, 864, 683
	(5, 242, 931)	24, 244, 703
	17, 817, 242	12, 330, 949
	174, 200, 067	199, 339, 021
:	(208, 688, 953)	(188, 180, 850)
	(3, 749, 999)	(2, 663, 628)
	(12, 183, 063)	(5, 217, 982)
	-	(9, 600, 000)
	3, 983, 468	2, 412, 898
	7, 948, 629	4, 614, 394
	2, 630, 000	-
	(210, 059, 918)	(198, 635, 168)
:	64, 320, 752	91, 918, 751
	49, 909, 022	74, 985, 000
	-	(124, 769, 718)
	5, 000, 000	-
	(65, 347, 912)	(49, 330, 000)
	762, 710	561, 806
	247, 137	40, 492

- 6, 456, 486

	<u>44, 891, 709</u>	<u>137, 183</u>
	<u>(1, 562)</u>	<u>(92, 258)</u>
()	9, 030, 296	474, 412
	576, 766, 591	576, 292, 179
	<u>585, 796, 887</u>	<u>576, 766, 591</u>

*