

SEMICONDUCTOR MANUFACTURING INTERNATIONAL CORPORATION

*

0981

	279,500,000		310,000,000
10.9%	143,188.8		
92%	87%		8.2%
	2.3%		26,100,000
	40,400,000		
			13.09(1)

279,500,000	310,000,000	10.9%
143,188.8		
92%	87%	
	2.3%	8.2%
	7.5%	355,664.8

	SMI	981		
279,500,000	10.9%	310,000,000		
143,188.8			87%	92%
		2.3%	8.2%	
40,400,000			26,100,000	
				90%
0.18				
		5		
	5.77		7	
	25			
0.13				
			TD-SCDMA 0.13	
		90		
	90			
Saifun	90		2G NAND	Elpida
	4	DRAM	100	90
				65

1-617-224-4324

SMIC

852-3002-1672

SMIC

www.smics.com

6 K

Jimmy Lai

86-21-5080-2000

86-21-5080-3619

16088

Calvin Lau

86-21-5080-2000

86-21-5080-3619

16693

	_____	_____	_____	_____	_____
	309,959	279,500	10.9%	274,897	12.8%
	284,686	273,111	4.2%	201,141	41.5%
	25,273	6,389	295.6%	73,756	-65.7%
	46,219	38,469	20.1%	31,218	48.1%
	(20,946)	(32,081)	-34.7%	42,538	149.2%
	(5,602)	(8,234)	-32.0%	(3,195)	75.4%
	6	118	-94.9%	-	-
	(26,554)	(40,433)	-34.4%	39,343	-167.5%
	439	(12)	-	-	-
()	26,115	40,445	-35.4%	39,343	-166.4%
	8.2%	2.3%		26.8%	
	-6.8%	-11.5%		15.5%	
(1)	(\$0.0014)	(\$0.0022)		\$0.0022	
	(\$0.0718)	(\$0.1113)		\$0.1095	
	(\$0.0014)	(\$0.0022)		\$0.0022	
	(\$0.0718)	(\$0.1113)		\$0.1079	
8 (2)	355,664	330,499	7.6%	263,808	34.8%
(3)	\$989	\$938	5.4%	\$1,091	-9.3%
	\$841	\$807	4.2%	\$991	-15.1%
(4)	\$871	\$846	3.1%	\$1,042	-16.4%
	92%	87%		99%	

(1)

		310,000,000		279,500,000
	10.9%		274,900,000	12.8%
		143,188	8	
8		355,664		330,499
7.6%				
		4.2%		
	92%			
		273,100,000	4.2%	
284,700,000				
		25,300,000		6,400,000
	295.6%		73,800,000	65.7%
		2.3%		8.2%
		16,300,000	17.7%	
19,200,000		90		6
		5,400,000	69.0%	
9,100,000			2,500,000	
		300,000		
			3,000,000	35.2%
4,100,000				
10,100,000	5.7%		10,700,000	
		32,100,000		20,900,000
		8,200,000	32.0%	
5,600,000				
1,600,000			1,200,000	
			9,000,000	15.2%
10,300,000				
	900,000		300,000	
			1,200,000	
			40,400,000	35.4%
26,100,000				

1. _____

	33.7%	39.8%	36.8%	26.8%	20.5%
	39.8%	40.4%	44.5%	58.1%	57.2%
	22.8%	15.2%	13.6%	10.2%	17.1%
	3.7%	4.6%	5.1%	4.9%	5.2%
DRAM	65.5%	58.9%	61.9%	75.1%	77.6%
	31.0%	36.4%	33.0%	20.4%	17.5%
	3.5%	4.6%	5.1%	4.5%	4.9%
	43.2%	42.2%	48.1%	50.2%	35.3%
	52.8%	55.2%	49.6%	47.5%	56.3%
	4.0%	2.6%	2.3%	2.3%	8.4%
	42.9%	40.8%	40.4%	34.9%	41.8%
	25.7%	26.3%	26.9%	43.5%	31.5%
	4.5%	6.0%	8.0%	8.8%	15.6%
	26.9%	26.9%	24.7%	12.8%	11.1%

Q. 13	43.8%	44.5%	29.2%	13.8%	11.9%
Q. 15	2.7%	2.5%	12.5%	14.9%	13.2%
Q. 18	45.3%	40.7%	40.3%	33.6%	46.2%
Q. 25	3.1%	3.9%	4.6%	6.0%	6.4%
Q. 35	5.1%	8.4%	13.4%	31.7%	22.3%
(1)					
Q. 13	14.7%	12.6%	5.4%	2.4%	1.8%
Q. 15	5.3%	4.8%	2.2%	5.3%	4.6%
Q. 18	67.4%	59.4%	59.8%	38.2%	56.2%
Q. 25	4.0%	7.1%	7.1%	7.8%	6.1%
Q. 35	8.6%	16.1%	25.5%	46.3%	31.3%

(1) Q. 13

58.9% 65.5%

40.8% 42.9%

Q. 18 91.8%

87.7% 71.3%

Q. 18

87.4% 76.8% 62.6%

	(1)	(1)
8	43,000	45,000
8	44,378	43,045
12	21,605	16,787
8	15,000	15,000
	123,983	119,832

8	19,205	19,193
	19,205	19,193

1

8

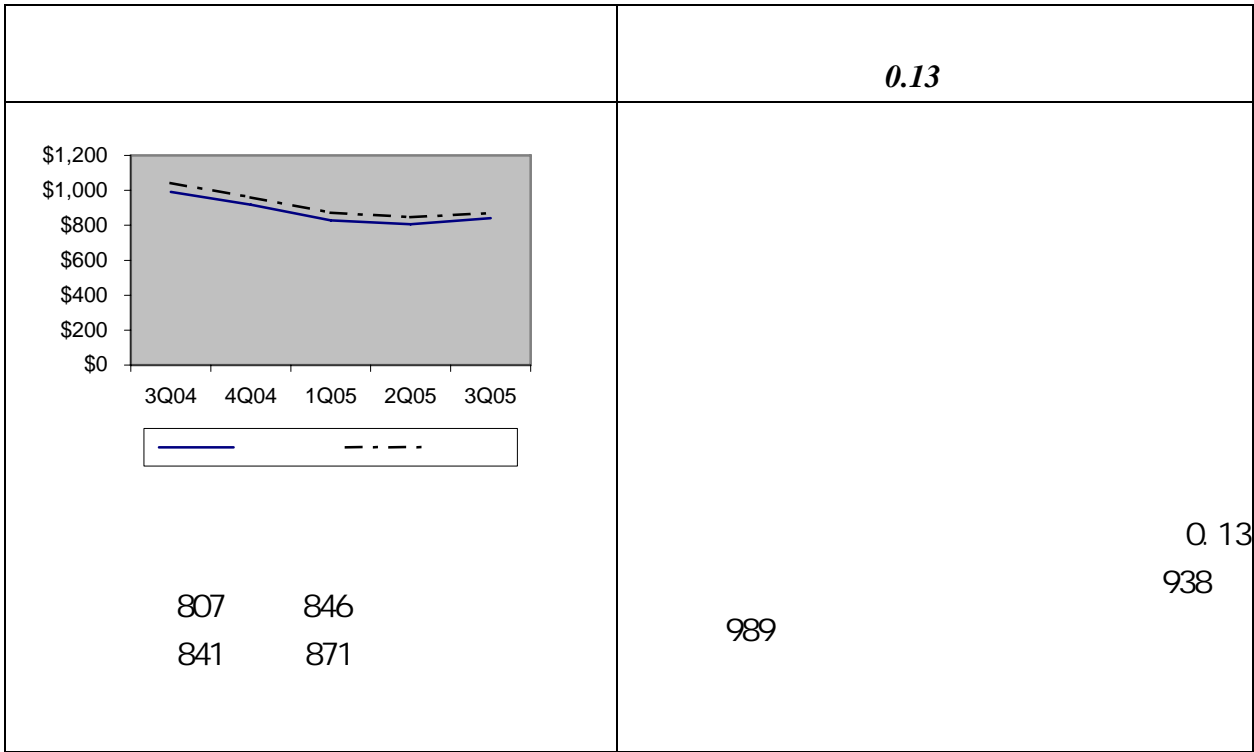
143,188 8

8					
	355,664	330,499	284,912	303,796	263,808
(1)	92%	87%	85%	95%	99%

(1)

330,499 34.8% 92%

355,664 8 263,808 7.6%



2 _____

	284,686	273,111	4.2%	201,141	41.5%
	167,919	171,216	-1.9%	108,254	55.1%
	116,767	101,895	14.6%	92,887	25.7%
	25,273	6,389	295.6%	73,756	-65.7%
	8.2%	2.3%		26.8%	
		273,100,000	4.2%		
284,700,000					
	25,300,000			6,400,000	
295.6%		73,800,000		65.7%	
	2.3%		8.2%		

	46,219	38,469	20.1%	31,218	48.1%
	19,230	16,344	17.7%	18,427	4.4%
	9,122	5,397	69.0%	3,831	138.1%
	4,072	3,012	35.2%	1,899	114.4%
	10,661	10,082	5.7%	3,507	203.9%
	3,135	3,634	-13.7%	3,554	-11.8%

38,500,000 46,200,000
 20.1%
 19,200,000 90 16,300,000 17.7%
 6
 () 5,400,000 69.0%
 9,100,000 300,000
 2,500,000
 4,100,000 , 3,000,000 35.2%
 10,100,000 5.7% 10,700,000

()	(5,602)	(8,234)	-32.0%	(3,194)	75.4%
	3,278	2,030	61.5%	3,107	5.5%
	(10,334)	(8,971)	15.2%	(3,614)	185.9%
	1,454	(1,293)	-	(2,687)	

8,200,000 32% 5,600,000

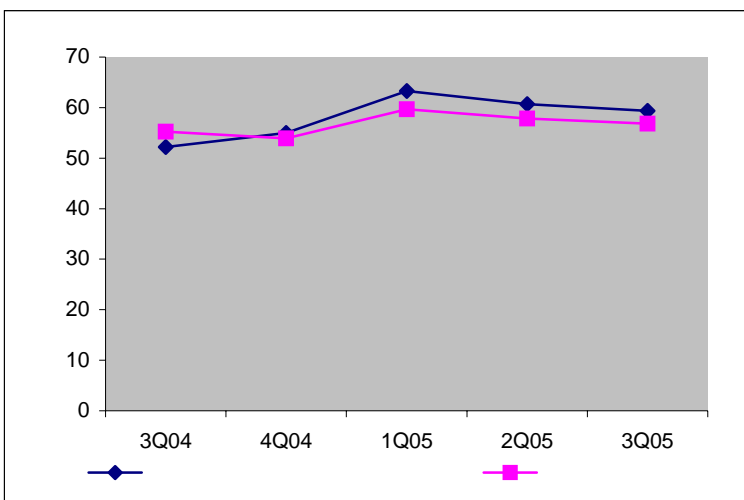
10,300,000

9,000,000

15.2%

3

	576,767	576,292
	5,582	2,768
	212,823	196,132
	182,851	176,502
	12,582	16,397
	990,605	968,091
	259,797	249,595
	266,589	224,000
	246,081	228,625
	113,154	96,746
	885,621	798,966
	0.7x	0.7x
	0.9x	1.0x
	1.1x	1.2x



	576,767	576,292
	5,582	2,768
	19,578	19,090
	116,749	116,204
	266,589	224,000
	246,081	228,625
	444,566	511,807
	957,236	964,432
	(511,214)	(520,666)
	3,034,237	3,053,111
	3815%	3816%

4. _____

	(26,115)	(40,445)
	192,347	185,978
	10,661	10,082
	474	137,491

189,230,000

5. _____

92% 93%

ASP

8% 11%

15% 19%

90

250,000,000

300,000,000

210,000,000

215,000,000

6

0.13 3G

65

SAI FUN NRCM

2 0

http://www.smics.com/website/enVersion/Press_Center/pressRelease.jsp

284,091
109,362

	()	()
	576,766,591	576,292,179
	5,581,511	2,768,085
	212,822,764	196,132,014
	182,850,604	176,502,315
	12,583,729	14,564,660
	-	1,831,972
	990,605,199	968,091,225
	38,136,980	38,758,108
	3,284,892,971	3,309,941,020
	202,843,555	192,817,289
	18,340,174	9,524,730
	4,534,818,879	4,519,132,372
	259,796,976	249,594,589
	93,576,700	77,655,608
	266,589,185	224,000,435
	19,577,936	19,090,094
	246,080,580	228,625,170
	885,621,377	798,965,896

116, 748, 925	116, 203, 745
444, 566, 420	511, 806, 547
15, 039, 304	-

576, 354, 649	628, 010, 292
---------------	---------------

1, 461, 976, 026	1, 426 , 976, 188
------------------	-------------------

38, 605, 893	39, 044, 852
--------------	--------------

0.0004
50,000,000,000
18,282,217,408
18,246,615,105

7, 312, 888	7, 298, 647
32, 387	32, 387
3, 290, 310, 978	3, 289, 932, 622
(247, 137)	(287, 629)
794, 214	67, 782
(31, 025, 668)	(37, 107, 243)
(232, 940, 702)	(206, 825, 234)

3, 034, 236, 960	3, 053, 111, 332
------------------	------------------

4, 534, 818, 879	4, 519, 132, 372
------------------	------------------

()	()
309,959,083	279,500,151
281,908,983	270,068,286
2,777,550	3,043,259
25,272,550	6,388,606
19,229,715	16,343,815
9,121,980	5,396,571
4,071,957	3,012,598
10,660,670	10,081,688
3,134,817	3,634,441
46,219,139	38,469,113
(20,946,589)	(32,080,507)
3,277,964	2,029,899
(10,333,503)	(8,970,776)
1,453,794	(1,293,508)
(5,601,745)	(8,234,385)
(26,548,334)	(40,314,892)
6,068	118,449
438,934	(11,947)
(26,115,468)	(40,445,288)
-	-

*

	(26, 115, 468)	(40, 445, 288)
--	----------------	----------------

	(0.0014)	(0.0022)
--	----------	----------

(1)	(0.0718)	(0.1113)
-----	----------	----------

	(0.0014)	(0.0022)
--	----------	----------

(1)	(0.0718)	(0.1113)
-----	----------	----------

	18, 180	18, 169
--	---------	---------

	18, 180	18, 169
--	---------	---------

*

	1, 125, 943	1, 246, 376
--	-------------	-------------

	1, 403, 732	1, 810, 959
--	-------------	-------------

	605, 142	577, 106
--	----------	----------

	3, 134, 817	3, 634, 441
--	-------------	-------------

(1)

50

	()	()
	(26,115,468)	(40,445,288)
	-	-
	(26,115,468)	(40,445,288)
	(438,934)	11,947
	(1,245,543)	23,609
()	174,729	(233,406)
	192,347,054	185,977,726
	10,660,671	10,081,688
	5,912,367	6,677,700
	1,033,022	1,150,866
	784,556	5,579
	(16,865,479)	(15,021,064)
	(6,348,289)	(1,977,063)
	2,864,683	(7,684,704)
	24,244,703	(872,935)
	12,330,949	(2,661,260)
	199,339,021	135,033,395

:

(188,180,850)	(227,154,585)
(2,663,628)	(2,353,756)
(5,217,982)	(2,416,480)
(9,600,000)	(6,720,000)
2,412,898	10,000,000
4,614,394	1,111,677

	(198, 635, 168)	(227, 533, 144)
	91, 918, 751	145, 540, 347
	74, 985, 000	99, 943, 394
	(124, 769, 718)	-
	(49, 330, 000)	(55, 000, 000)
	561, 806	777, 415
	40, 492	51, 529
	-	39, 000, 025
	6, 456, 486	-
	137, 183	230, 312, 710
	(92, 258)	(322, 315)
	474, 412	137, 490, 646
	576, 292, 179	438, 801, 533
	576, 766, 591	576, 292, 179

*